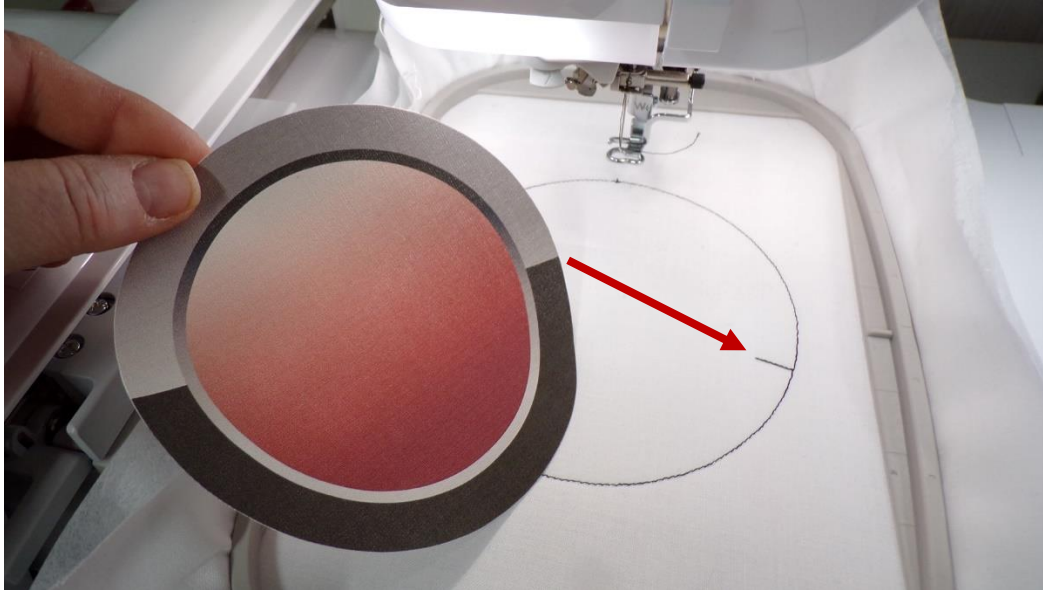
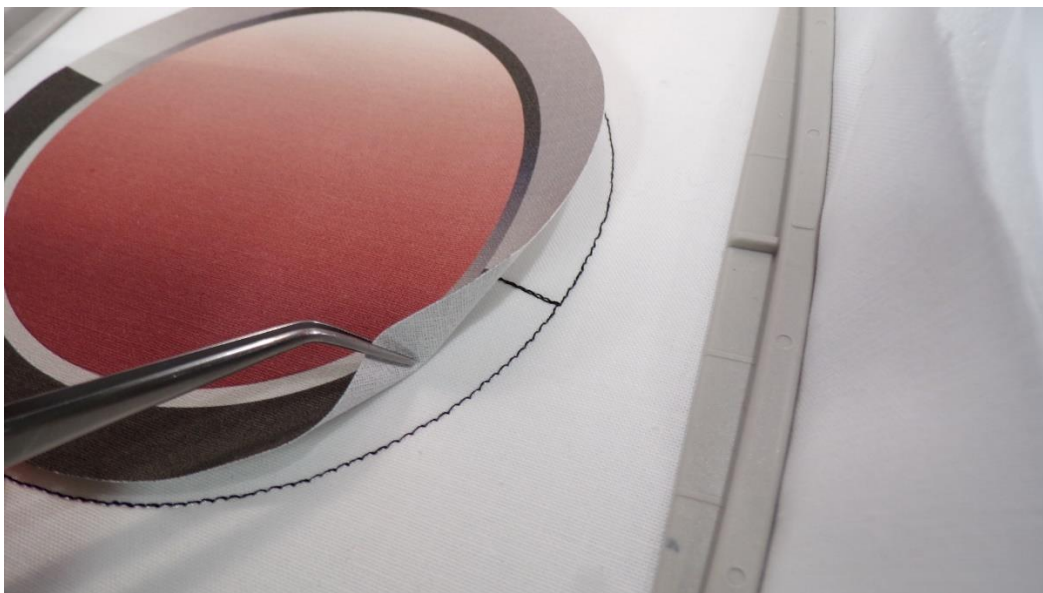


2018 ASG **APPLIQUE** conference logo instructions.

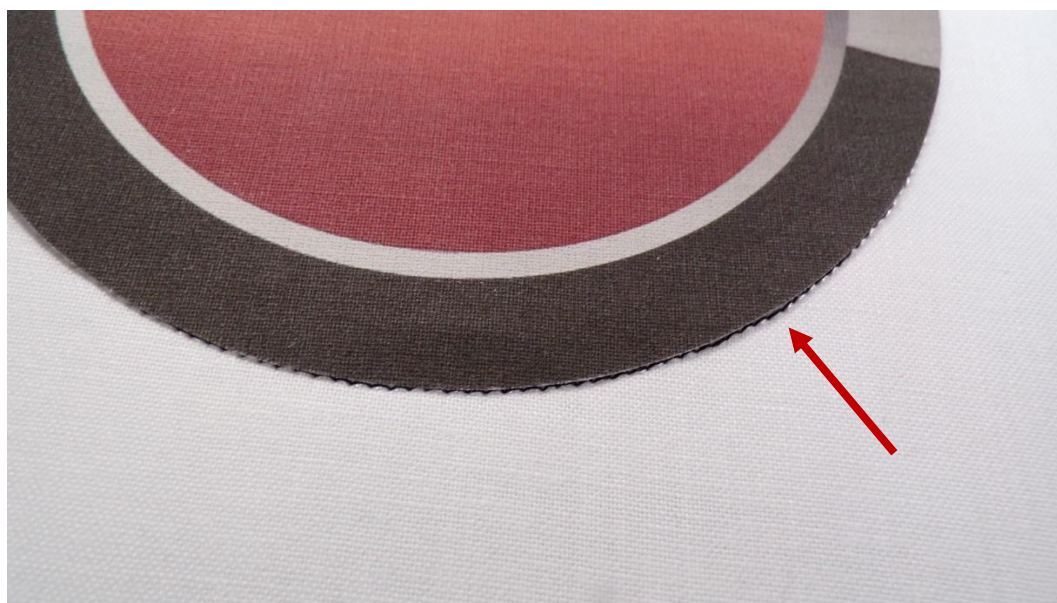
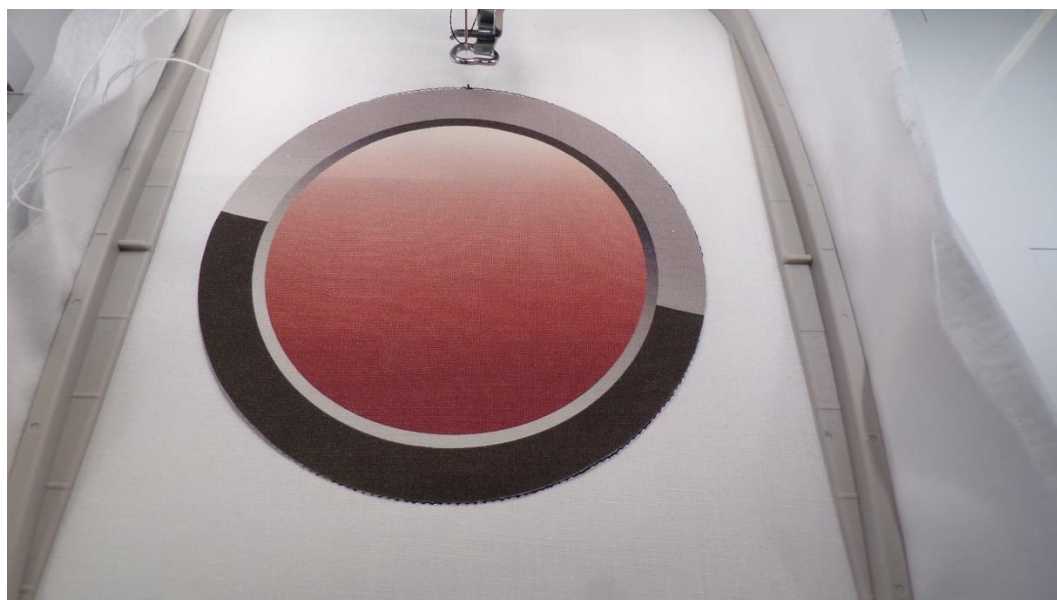
1. Print the color sequence sheet.
2. Print the .pdf, at actual size, on a fabric printer sheet (i.e. June Tailor or Printed Treasures).
3. Cut out exactly on the outer most line.
4. Hoop fabric with two layers of heavy cutaway stabilizer. Load the design on the machine and place the hoop on the machine.
5. Stitch color 1, the placement line. The black/gray line on the right side of the applique will align to the stitching line that goes to the inside of the circle on the placement line.



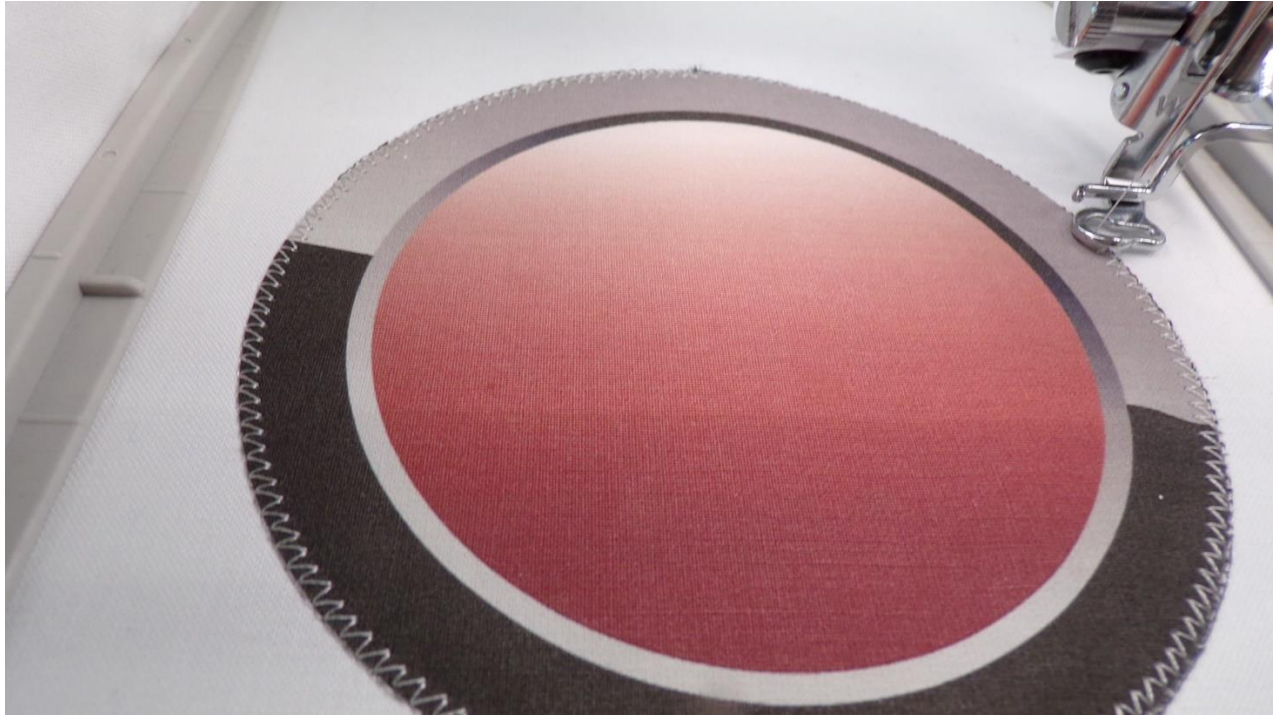
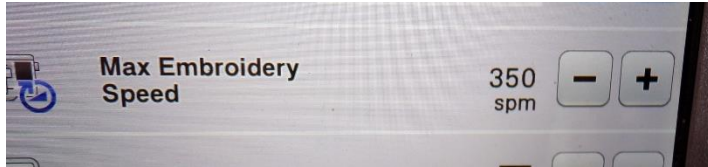
6. Spray the back of the applique piece with **KK2000** (or other spray adhesive). Align the line of the applique, exactly to the extended line stitched as part of the placement line.



7. The cut edge of the applique will align to the placement line.



8. Stitch color 2, the tackdown. Slow the machine way down so that you can make sure the tackdown line captures the cut edge of the applique all the way around.



9. Follow the color sequence to stitch the remainder of the logo. The center line will stitch right on the applique line.

